



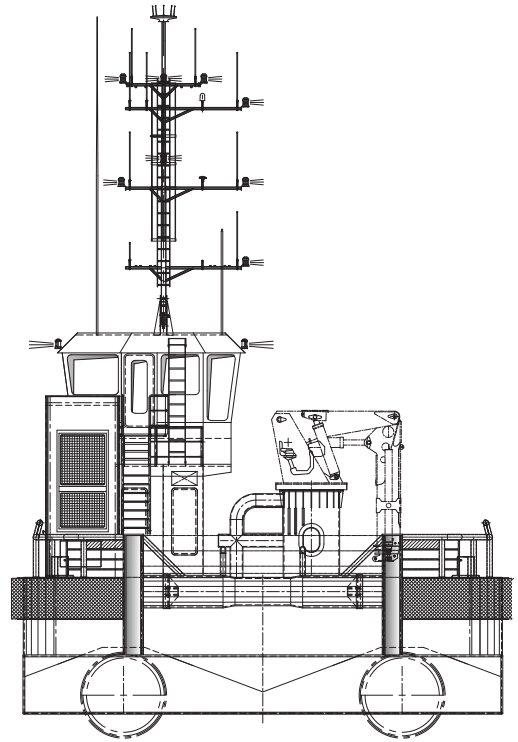
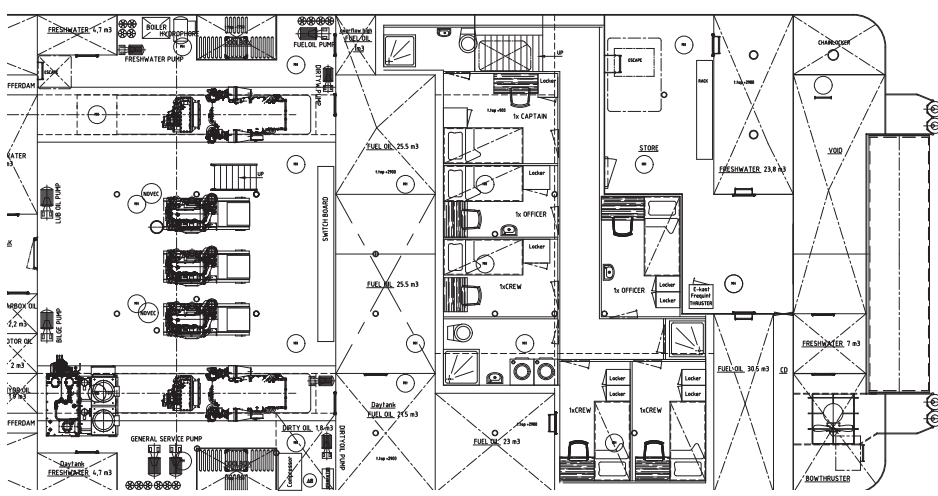
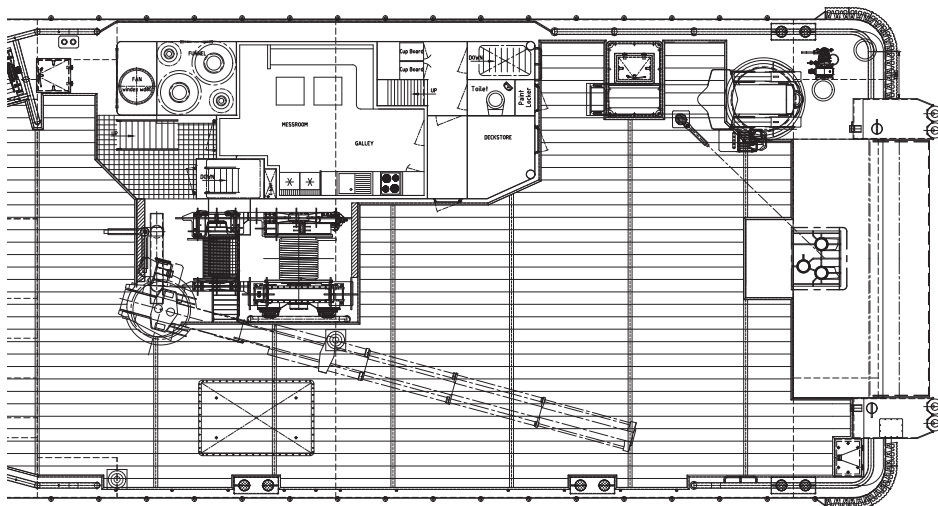
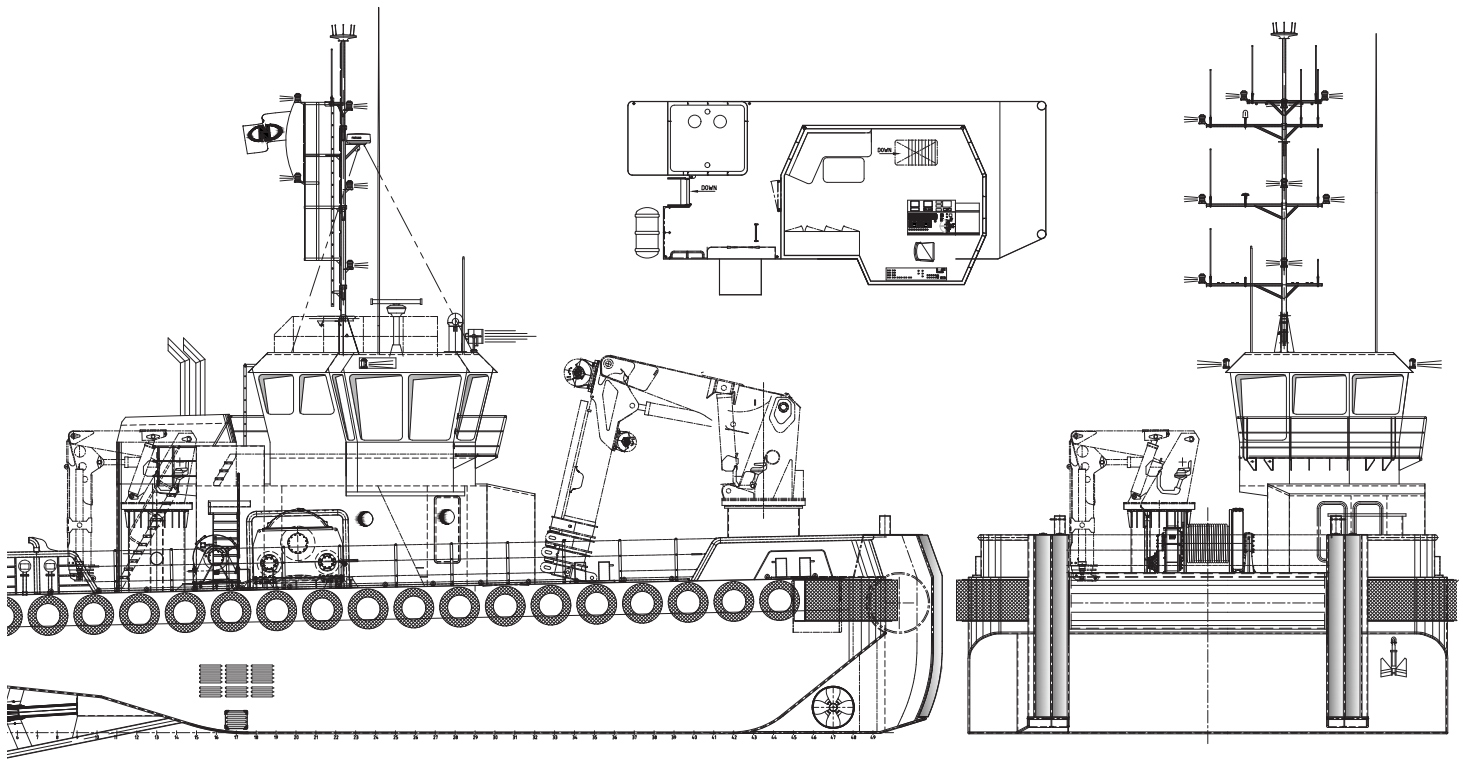
MultiCarrier 2712 | Workboat



The robust, efficient and flexible design of the EuroCarrier makes it one of the best vessels for anchor handling, dredging support and survey activities. The EuroCarrier can be adapted to perfectly fit any project within a short time.



CLASSIFICATION	Bureau Veritas I  HULL • MACH • AUT-UMS, Unrestricted Navigation, Multi-Purpose / Special Service GMDSS Area A2	TANKS	
DIMENSIONS		FUEL OIL	33,285 gals 126,0 m ³
LENGTH O.A.	55.8 ft 27,00 m	FRESH WATER	21,710 gals 82,2 m ³
BREADTH MLD.	39 ft 12,00 m	DECK LAY-OUT	
DEPTH AT SIDE	11/12.8 ft 3,40/3,90 m	ANCHOR HANDLING WINCH	125 tons holding force
DRAFT	9.8 ft 3,00 m	PULLING FORCE	100 tons at 1 st layer
GROSS TONNAGE	290	HAULING SPEED	295 ft/min - 59 ft/min 9m/min – 18m/min
NET TONNAGE	86	TOWING WINCH	65 tons holding force
RULE LENGTH	23,99 m	PULLING FORCE	50 tons at 1 st layer
PERFORMANCES		HAULING SPEED	23 ft/min - 69 ft/min 7m/min – 21m/min
SPEED	9 knots	TUGGER WINCH	15 tons at 1 st layer
BOLLARD PULL	35 tons	DECK CRANE FORWARD	Heila HLRM 280-3SL
PROPULSION		DECK CRANE AFT	Heila HLRM 140-3S
MAIN ENGINES	2x Caterpillar C32 ACERT	DECK	Azobé deck covering
TOTAL POWER	2600 hp (1940 kW) at 1800 RPM	TOWING HOOK	Mampaey 45 tons SWL
PROPELLERS	72.8 in 1850 mm diameter in nozzle	TOWING PINS	Aft ship: manual set, fore ship: hydraulic set + chain stopper
AUXILIARIES		FENDERING	Tire- and M-fendering on the side, pushbow fendering fore- and aft ship
GENERATOR SETS	3x Caterpillar C9	ACCOMMODATION	
TOTAL E-POWER	805 hp 600 kW	FACILITIES	Airconditioned accommodation for up to 7 persons
HYDRAULIC POWER PACK	3x 121 hp (90 kW)	OPTIONS	
BOW THRUSTER	Tunnel thruster in SB pushbow	4-POINT MOORING SYSTEM	4 hydraulic winches and anchors
		SHARK JAWS	Triplex type
		TOWING PINS	5 ton, hydraulic driven
		DYNAMIC POSITIONING	Class 1



MultiCarrier 2712 | Workboat

For more information, please contact us on:

T +1 (346) 708 8070 E info@neptuneamericas.com W www.neptuneamericas.com

