

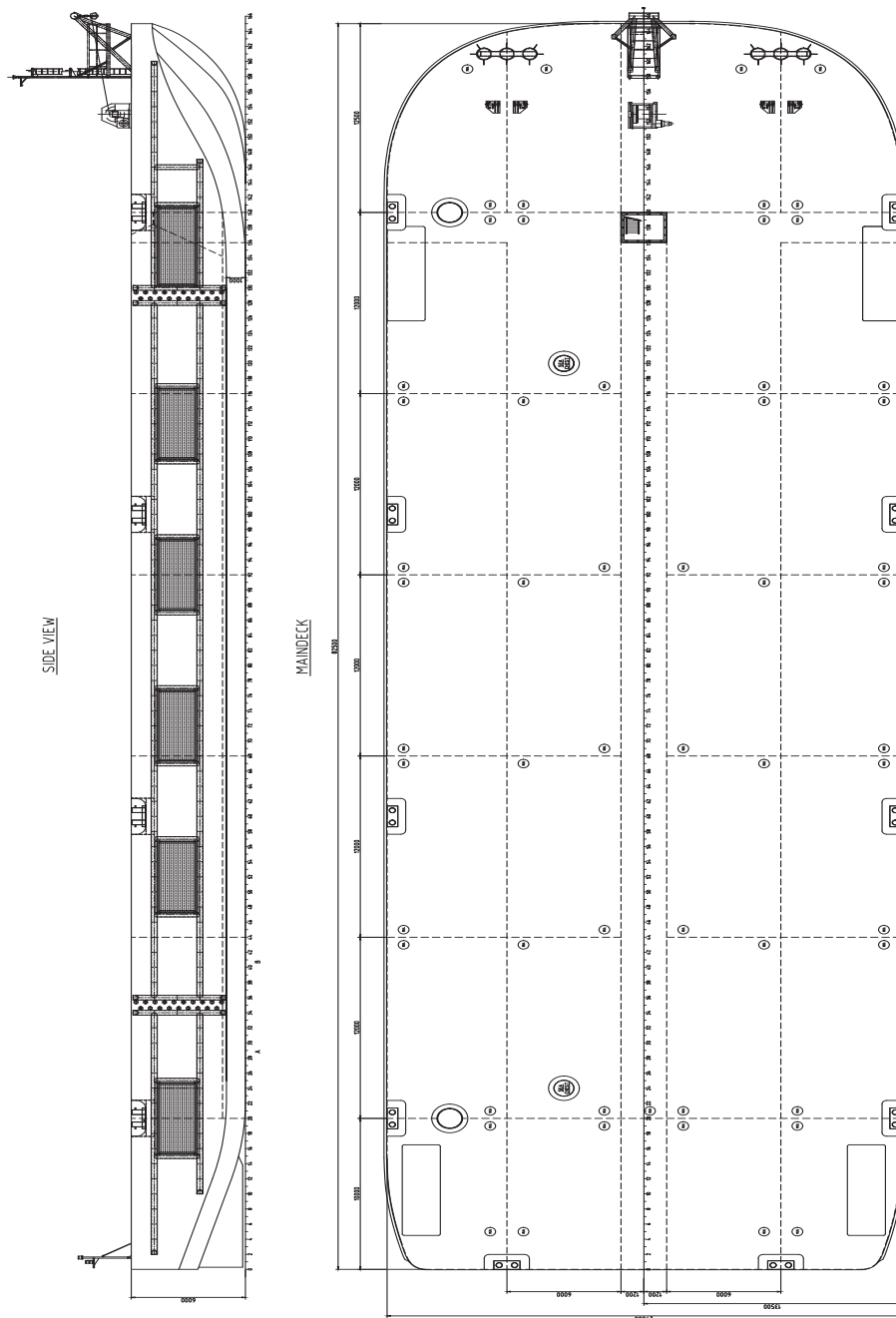


Neptune has got various vessels and pontoons available for sale or charter. To fulfil your operational demands, Neptune offers a wide range of deck equipment, including accommodation units, mooring equipment and cranes.



|                        |   |
|------------------------|---|
| <b>CLASSIFICATION</b>  | Bureau Veritas I ✕ HULL<br>Unrestricted Navigation<br>Unmanned Towing |
| <b>DIMENSIONS</b>      |   |
| LENGTH O.A.            | 271 ft   82,50 m  |
| BREADTH MLD.           | 88.5 ft   27,00 m   |
| DEPTH AT SIDE          | 19.7 ft   6,00 m  |
| MIN. DRAUGHT           | 3.8 ft   1,17 m   |
| MAX. DRAUGHT           | 15.9 ft   4,85 m  |
| GROSS TONNAGE          | 3503  |
| NET TONNAGE            | 1050  |
| <b>CONSTRUCTION</b>    |   |
| DECK PLATE THICKNESS   | 0.71 in   18mm  |
| SHEERSTRAKE THICKNESS  | 0.63 in   25mm  |
| NUMBER OF COMPARTMENTS | 30 Void spaces  |

|                            |  |
|----------------------------|--|
| <b>CAPACITY</b>            |  |
| CARGO CAPACITY             | 8010 tons  |
| DECK LOAD                  | 20 tons/ 10.76 sq ft (m²)                                  |
| <b>STANDARD OUTFITTING</b> |  |
| BOLLARDS                   | 8 x double bollards plus 2 x double aft                    |
| BOARDING LADDERS           | Recessed ladders 2 x PS & 2 x SB                           |
| SPUD POLE FOUNDATIONS      | 2 x at SB side   |
| MANHOLES                   | Flush type manholes  |
| TOWING BRACKETS            | 4 x SMIT brackets at the bow                               |
| <b>OPTIONS</b>             |  |
| TOWING ARRANGEMENT         | Towing bridle with chains and emergency towing arrangement |
| SPUD POLES                 | 49.6 in (1260 mm) diameter                                 |
| DECK EQUIPMENT             | Accommodation units, mooring units and cranes              |
| SUBMERSIBLE                | Up to 19.6 ft (6 meters)                                   |



## Pontoon 8327 | Pontoon

For more information, please contact us on:

T +1 (346) 708 8070 E [info@neptuneamericas.com](mailto:info@neptuneamericas.com) W [www.neptuneamericas.com](http://www.neptuneamericas.com)

