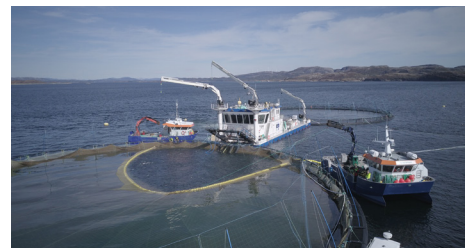



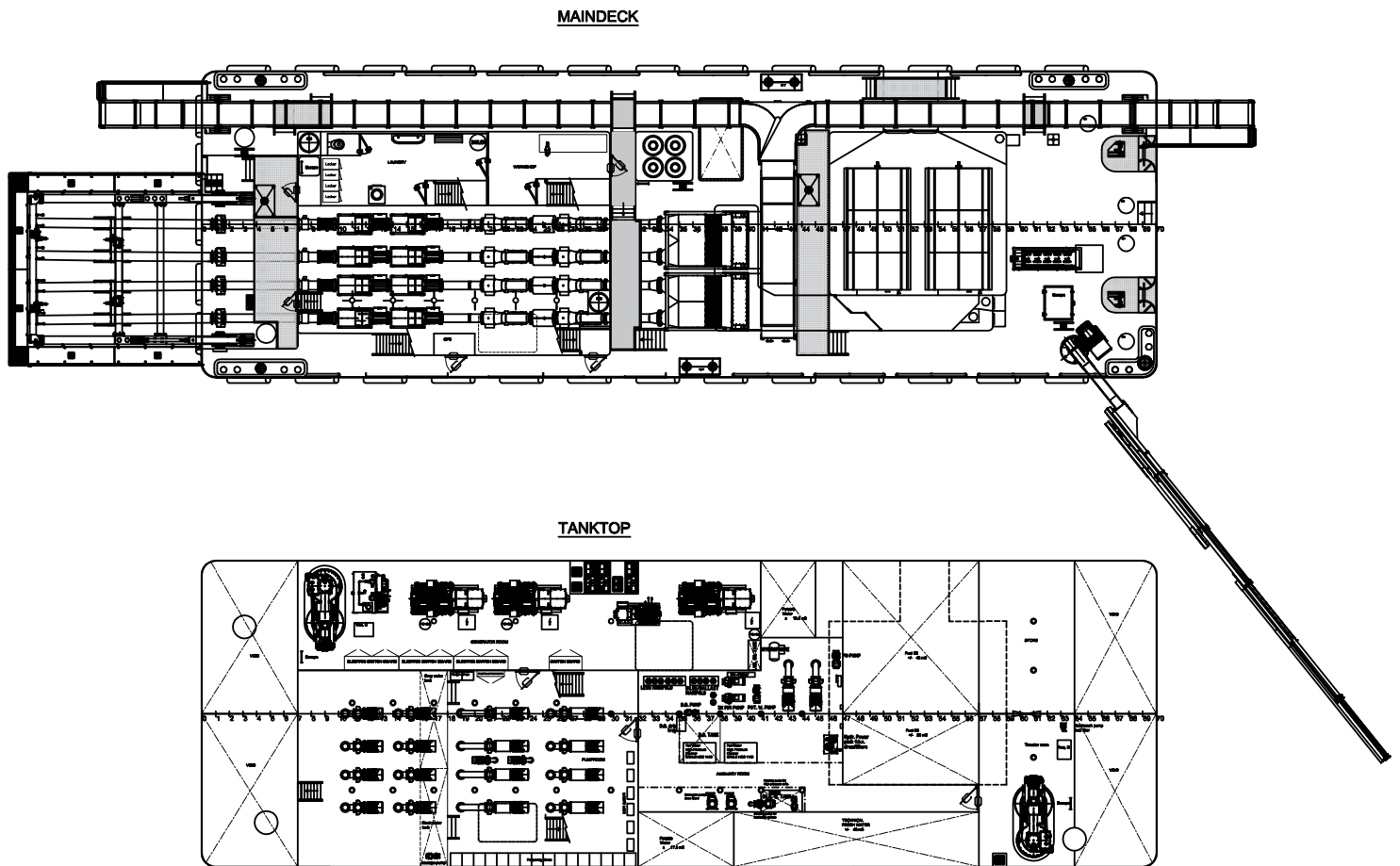
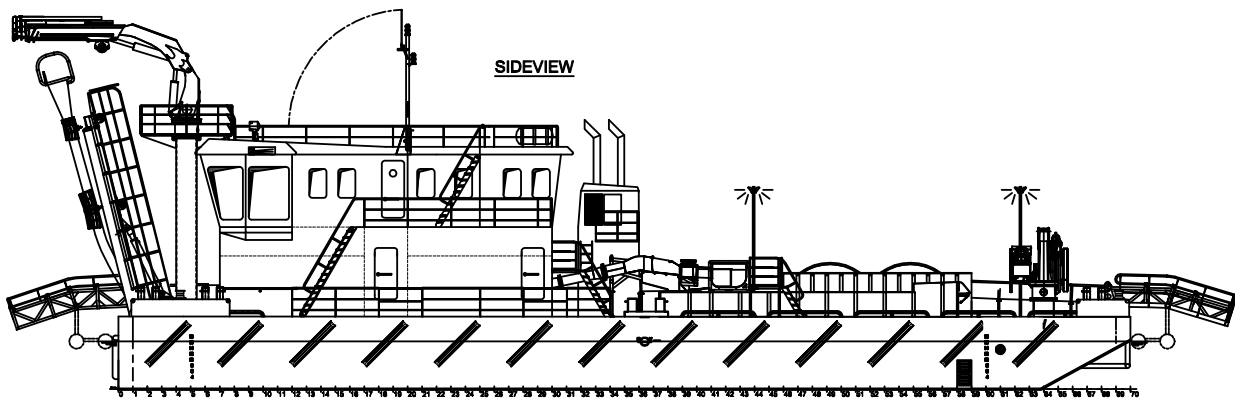


This type of Pontoon is designed to meet the requirements of modern aquaculture. Through the integration of a Hydrolicer delousing system, the SPP enables your aquaculture business to deal with the challenges of tomorrow.



CLASSIFICATIONS	Bureau Veritas  HULL • MACH
DIMENSIONS	Approx.
LENGTH O.A.	115 ft 35,00 meters
BREADTH MLD.	36.7 ft 11,20 meters
DEPTH AT SIDE	8.2 ft 2,50 meters
MAX. DRAUGHT	7.6 ft 1,40 meters
GROSS TONNAGE	388 tons (approx.)
NET TONNAGE	116 tons (approx.)
AUXILIARIES	
GENERATOR SETS	3x Scania DI-16 75M
TOTAL POWER	3x 644 hp 3x 480 kW
HARBOUR SET	22.8 hp 57 kW

DECK EQUIPMENT	
DECK CRANE	3x HS Marine 48-AK 1.8-E5
MAX. REACH	61 ft 18,55 meters
MAX. CAPACITY	48 t/m
WINCH CAPACITY	2 tonnes
A-FRAME	Hydraulic driven including 4 x 2 tons hose-lifting winches
CAPSTANS	4x capstans (3 tons)
FACILITIES	
CONTROL ROOM	Optimized sight lines for fish farm operations
ACCOMMODATION	Air-conditioned single bed cabins for 4 persons
HYDROLICER SYSTEM	
NUMBER OF LINES	4-Line system
FISH DROP	Return to same pen To next pen with dismountable slides
OPTIONAL ITEMS	
THRUSTERS (ASSISTANT PROPULSION)	2x Veth Steering grid type VSG-1000L, 2x 335 hp 2x 250 kW



Hydroflow | Aquaculture Support Pontoon

For more information, please contact us on:

T +1 (346) 708 8070 E info@neptuneamericas.com W www.neptuneamericas.com

