



EuroPontoon 6017 | Pontoon

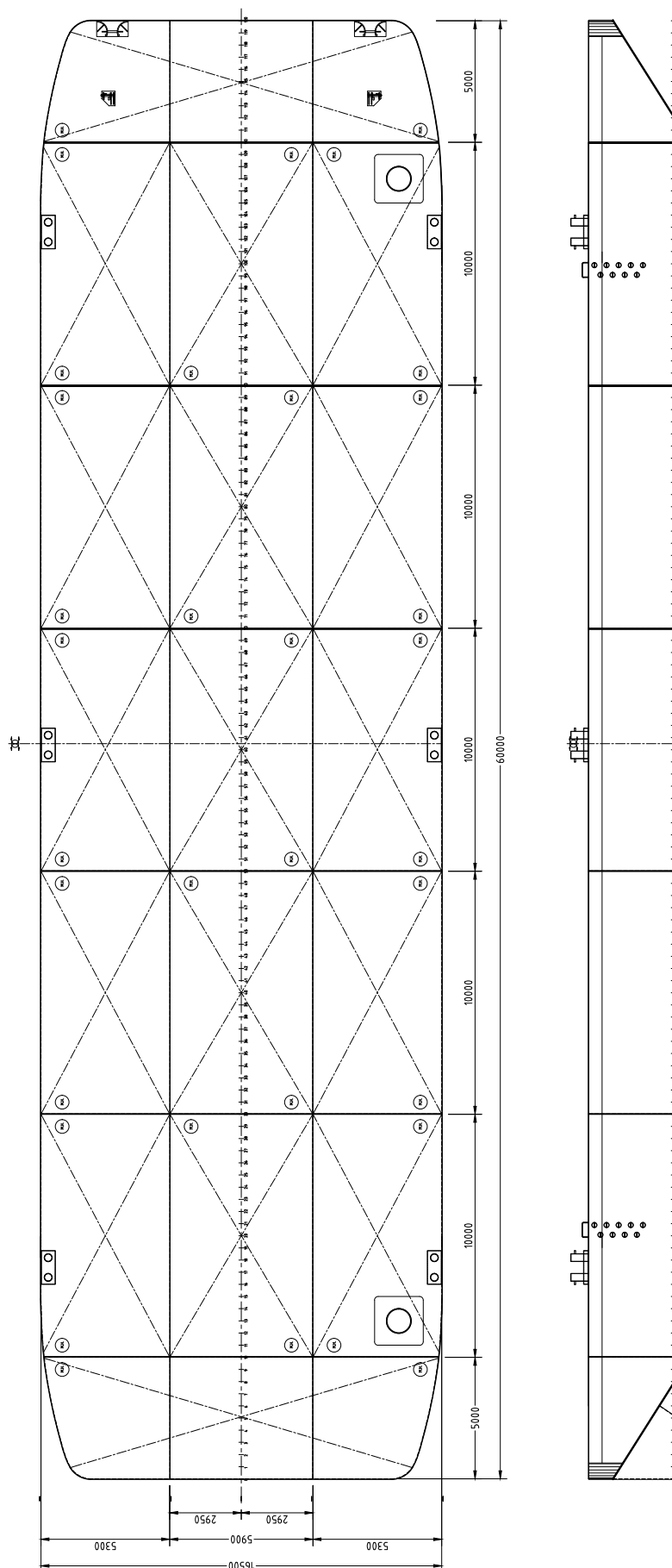


Neptune has got various vessels and pontoons available for sale or charter. To fulfil your operational demands, Neptune offers a wide range of deck equipment, including accommodation units, mooring equipment and cranes.



| | |
|------------------------|---|
| CLASSIFICATION | Bureau Veritas I ✘ HULL Unrestricted Navigation Unmanned Towing |
| DIMENSIONS | |
| LENGTH O.A. | 60,00 meters |
| BREADTH MLD. | 16,50 meters |
| DEPTH AT SIDE | 3,50 meters |
| MIN. DRAUGHT | 0,57 meters |
| MAX. DRAUGHT | 2,72 meters |
| GROSS TONNAGE | 891 |
| NET TONNAGE | 267 |
| CONSTRUCTION | |
| DECK PLATE THICKNESS | 12 mm |
| SHEERSTRAKE THICKNESS | 25 mm |
| NUMBER OF COMPARTMENTS | 17 void spaces |

| | |
|----------------------------|--|
| CAPACITY | |
| CARGO CAPACITY | 2140 tons |
| DECK LOAD | 15 tons m ² |
| STANDARD OUTFITTING | |
| BOLLARDS | 6 x double bollards |
| SPUD POLE FOUNDATIONS | 2 x at SB side |
| BOARDING LADDERS | Recessed ladders 2 x PS & 2 x SB |
| MANHOLES | Flush type manholes |
| TOWING BRACKETS | 2 x SMIT brackets at the bow |
| OPTIONS | |
| TOWING ARRANGEMENT | Towing bridle with chains and emergency towing arrangement |
| SPUD POLES | Spuds with a diameter of 914mm |
| SPUD HANDLING ARRANGEMENT | Hydraulic cylinders or winches |
| DECK EQUIPMENT | Accommodation units, mooring units and cranes |



EuroPontoon 6017 | Pontoon

For more information, please contact us on:

T +31 (0)184 621 423 E info@neptunemarine.com W www.neptunemarine.com

Version: V.01

